

Non spring return plant valve actuators

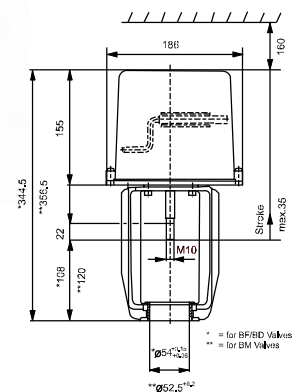
RA-3000

Floating and proportional control

The RA-3000 series synchronous motor-driven reversible actuators are available for floating or with electric positioner for 0...10 V control. They feature factory calibrated pressure switches to provide specified close-off ratings. These actuators are available in three sizes with 1600 N, 1800 N and with 3000 N nominal force and can be used with JC flanged valves according to maximum close-off pressure ratings specified. Factory fitted options, such as 2kOhm feedback potentiometer, auxiliary switches and hand crank are available.

Features

- ▶ Uses synchronous motor with pressure switches
- ▶ Special clamp coupler quick-fit systems
- ▶ Models for 3-point and proportional 0...10 VDC control
- ▶ Positioner with adjustable starting point, span, and direct/reverse action
- ▶ Active 0...10 VDC position feedback on proportional models
- ▶ Optional auxiliary switches and feedback potentiometer available
- ▶ Optional hand crank



Dimensions in mm

	RA-3xxx-712x	RA-3xxx-722x	RA-3xxx-732x
H1	58	66	66

Ordering information

Codes *	Hand crank **	Actuator force	Supply voltage	Nominal stroke	Protection class
RA-30xx-7126	---	1600 N	24 V, 50/60 Hz	13 mm	IP54
RA-31xx-7126	●		230 V, 50/60 Hz		
RA-30xx-7127	---	1800 N		24 V, 50/60 Hz	
RA-31xx-7127	●		230 V, 50/60 Hz		
RA-30xx-7226	---	3000 N		24 V, 60 Hz	
RA-31xx-7226	●		24 V, 50 Hz		
RA-30xx-7227	---	230 V, 50 Hz		230 V, 50 Hz	
RA-31xx-7227	●				
RA-30xx-7325	---	24 V, 60 Hz	24 V, 50 Hz		
RA-31xx-7325	●				
RA-30xx-7326	---	230 V, 50 Hz	230 V, 50 Hz		
RA-31xx-7326	●				
RA-30xx-7327	---	230 V, 60 Hz	230 V, 60 Hz		
RA-31xx-7327	●				
RA-30xx-7328	---	230 V, 60 Hz	230 V, 60 Hz		
RA-31xx-7328	●				

Note

* : xx = 00 None

03 2 auxiliary switches and 2 KW feedback potentiometer

05 2 auxiliary switches and 135 Ω feedback potentiometer

41 Built-in positioner 0...10 VDC and 2 auxiliary switches (only 24 VAC models)